

# Experience

**CAM-PLEX**  
MULTI-EVENT FACILITIES

November-December 2010

## Season's Greetings!

As the Holiday Season is upon us, we find ourselves reflecting on the past year and on those who have helped to shape our facility. We value our relationship with our great community and look forward to the year to come. We sincerely wish you a Happy Holiday Season and a New Year filled with peace and prosperity! The halls are decked and trees are all aglow, please join the Campbell County Public Land Board and the CAM-PLEX Staff for one or more special holiday events hosted at CAM-PLEX this season!

## Deer Camp: The Musical

**November 9, 7:00 p.m.**

What happens at Deer Camp, stays at Deer Camp! Take four good buddies, mix in cold beer, songs and a hunting shack up north, and the only thing safe in the woods are the deer! You'll laugh your antlers off! Every ticket purchased is a chance to win a \$300 prize package courtesy of Rocky Mountain Discount Sports. Cash bar.

**Tickets: \$15 Reserved Seating**



**November 30, 6:30 p.m.**

Bradley Fields captivates audiences with his famous magic illusions and then teaches the secrets behind some startling math tricks. MatheMagic!™ has been seen in over one thousand schools, theaters, and performing arts centers making it one of the most highly praised and best selling educational shows in the United States. Don't miss the magic!

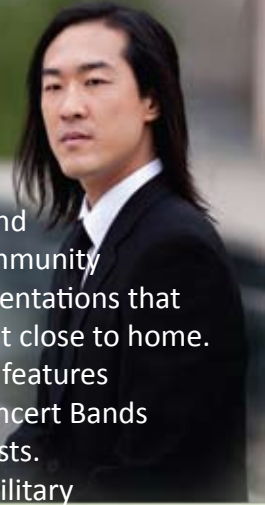
**Tickets: \$6 Adult \$4 Youth/Senior/Military**

## ALPIN HONG

**November 18, 7:00 p.m.**

Back by popular demand, classical pianist, Alpin Hong brings a dynamic energy to his classical performance. His tireless pursuit to find, inspire, and collaborate with talents in every community results in unforgettably magical presentations that simultaneously expand worlds yet hit close to home. This highly anticipated performance features students from the CCHS Jazz and Concert Bands as well as trumpet and clarinet soloists.

**Tickets: \$6 Adult \$4 Youth/Senior/Military**



**December 7, 7:00 p.m.**

MICHAEL LONDRA  
**BEYOND  
THE STAR**

This holiday favorite from Michael Londra is back with heartwarming stories, magical songs, and breathtaking dance featuring Celtic music from the Irish group *An Dochas*. Michael Londra and *An Dochas* perform age-old Celtic airs on pipes and low whistles while sharing traditional carols and classical stories from their home in Emerald Isle, Ireland. The glow of Christmas in Ireland from this show is guaranteed to send you out into the winter's night warmed by the spirit of a Celtic Christmas.

**Tickets: \$15 Reserved Seating**

*Tickets make great gifts!*

Theater Series Tickets: \$30 Adult & \$25 Youth/Senior/Military  
Family Friendly Show Tickets: \$6 Adult & \$4 Youth/Senior/Military  
Special Event Tickets: \$15

## Schedule of Events

### November

1	Paintbrush Grades 3-4 Concert	HC
1	Cloud Peak Benefits Meeting	WC-FR
2	Rozet Grades 3-4 Concert	HC
2	General Election	CP
4	Lakeview Grades 5-6 Concert	HC
4-5	Cloud Peak Benefits Meeting	WC-FR
5	CC Chamber Annual Banquet	EH
5	Gillette Gun Club Banquet	WC-EQ
6	RCM Barrel Racing	EP
6	Vance/Schmidt Wedding Reception	EH
6-7	Vision Dog Agility	B3
7	Wyoming Reining Cow Horse Assn. Clinic	EP
9	D.A. Davidson Customer Appreciation Party	WC-FR
9	<b>Deer Camp: The Musical</b>	<b>HC</b>
12	Rotary Cajun Night	EH
13	Women's Expo	WC
13	Gillette Church of Christ Youth Rally	CP
13	Stock Dog Trials	B3
13-14	ACTRA Team Roping	EP
14	Wyoming Reining Cow Horse Assn. Clinic	B3
15	District Elementary Strings Concert	HC
16	CC Fair Board Meeting	EH
18	<b>Alpin Hong</b>	<b>HC</b>
18	Society of Mining Engineers Consultant Night	WC-FR
19	Ringwars	WY-EQ
19-21	Festival of Trees	EH
19-21	Roper Barrel Futurity	EP
19-21	Wasatch Gun Show	CP
20	Thar's Ranch Sorting	B3
26-28	NRCA Finals Rodeo & Trade Show	EP & CP
30	<b>MatheMagic!</b>	<b>HC</b>

### December

2	Twin Spruce Choir Concert	HC
3	City of Gillette Banquet	EH
3-4	New Life Wesleyan Ladies Craft Show	WC
4-5	Vision Dog Agility	B3
4	RCM Barrel Racing	EP
4	Alpha Coal West Holiday Banquet	EH
5	Kissack Water Service Banquet	EH
7	<b>Michael Londra</b> <b>Celtic Yuletide: Beyond the Star</b>	<b>HC</b>
9-10	Powder River Coal Safety Summit	HC
10	Anadarko Petroleum Holiday Banquet	EH
11	CCMH Banquet	WC-EQ
11	Knight Technologies Christmas Party	WC-FR
11	Stock Dog Trials	B3
11	RCM Barrel Race	EP
11	Windcreek/Electrofab Dinner	EH
12	Powder River Symphony	HC
13	Conestoga Grades K-1 Concert	HC
14	Lakeview Grades 1-2 Concert	HC
16	Rozet Grades K-2 Concert	HC
17	Alpha Coal West Holiday Banquet	EH
18	Wyoming Machinery Company Party	EH
18	4-H Horse Clinic	B3
18	Lundvall/Wood Wedding Reception	HC
21	Campbell County Fair Board Meeting	EH
31	Buckin' Ball Rodeo & Dance	WC & CP

B3 - BARN #3  
CP - CENTRAL PAVILION  
EH - ENERGY HALL  
WR - WRANGLER ARENA  
EQ - EQUESTRIAN AREA

HC - HERITAGE CENTER  
MSP - MORNINGSIDE PARK  
MT - MOTOCROSS TRACK  
EP - EAST PAVILION  
C - CAM-PLEX FACILITIES

WC-EQ WYOMING CENTER EQUALITY HALL  
WC-FR WYOMING CENTER FRONTIER HALL  
WC-SP WYOMING CENTER SPIRIT HALL

The Heritage Center Ticket Office will be closed November 25 & 26, and December 24th-January 3rd, 2011. Warmest wishes to you and yours this holiday season!

**CAM-PLEX**  
1635 Reata Drive  
Gillette, WY 82718

OFFICES: (307) 682-0552  
FAX: (307) 682-8418  
TICKET OFFICE: (307) 682-8802  
WEBSITE: www.cam-plex.com  
E-MAIL: cam-plex@vcn.com

Return Service Requested

Pre-sort STANDARD  
U.S. POSTAGE  
PAID  
Gillette, WY 82718  
PERMIT NO. 220

## CAM-PLEX Heritage Center Gallery

*proudly presents the 22nd Annual  
Invitational Christmas Wreath Exhibit  
November 29th-December 17th*

For over two decades, the Heritage Center Gallery has proudly carried on the tradition of showcasing wreaths donated by local service groups and organizations to increase awareness of services provided to our community. The Gallery is open daily, 8:00 a.m.-5:00 p.m., during Heritage Center events, or by appointment. Wreaths are available for purchase through silent auction bid. All proceeds from wreath sales will benefit the respective sponsoring organizations. A \$100 cash prize is awarded to "Best of Show". Winning bidders will be notified December 20th. If you or your group are interested in participating in the exhibit please contact Mandy Love by November 7<sup>th</sup> at 682-0552. Add a trip to the Gallery to your list of holiday traditions!

## 2011 Winter Western February 11-13, 2011



*With Special Guest*

**Tickets: \$15**



Look for the complete Winter Western schedule in our next issue. The trade show exhibitor contract is now available at:  
[www.cam-plex.com](http://www.cam-plex.com).